

SEAFOOD DIRECTIONS 2007

HOW HEALTHY IS THE
AUSTRALIAN SEAFOOD
INDUSTRY?

ISSUES TO BE DISCUSSED

- Focused on the wild catch sector
- Western Australia and National
- People , people, people
- Education and training
- The importance of Social Impact assessments

FIRST OF ALL!

- QUESTION: Who are the most important people in the wild catch industry from the hook to the cook?
- ANSWER:

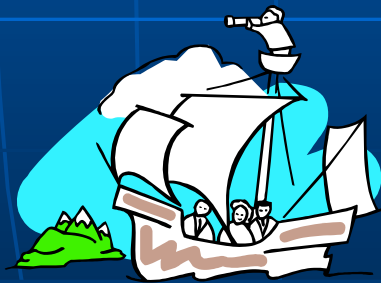


AUSTRALIAN WILD CATCH INDUSTRY

- Recognise that each wild catch sector is in a different level of "healthiness"
- Recognise also that within each fishery in each state there are different levels of "healthiness"

LETS GO ON A JOURNEY.....

WILD CATCH INDUSTRY in
WA in 1992



OVERVIEW

- Was (still is)a hunter , gatherer occupation
- Fiercely independent – prevent others from catching my fish, tell no one nothing!
- Any issues or industry initiatives that are not pivotal to catching fish are not worthy of their time
- Fishers across the state are still operating in a reasonable – very 'healthy' industry
- See themselves as bullet proof!
- Industry not focused on people

INDUSTRY VIEWS ON SAFETY , EDUCATION AND TRAINING

- Relevant only for certificates of competency to drive the vessel and
- For safety equipment on board the vessel – survey requirements
- Waste of time! Education and training are not necessary when the money is coming in
- Overall not thinking about the 'down' times that may occur as part of a primary producers lifecycle

*Experience has shown me that the
business's attitude to OCCUPATIONAL
HEALTH AND SAFETY AND TRAINING
is a reflection of the culture no matter what
size the business is!*

WHERE ARE WE IN 2007

- Still independent but slowly running out of energy!
- Fishers in some fisheries not operating in a 'healthy' industry
- Some fishers are angry, disappointed and don't know what to do next
- For some they are not making an income from fishing, it's the investments some made years ago keeping them afloat
- Industry still not focused on people
- Limited new people coming in

HOW HEALTHY IS THE WA SEAFOOD INDUSTRY

- Gradual erosion of fishing areas
- At the mercy of beaurocrats and politicians from all angles
- Changing markets
- Social impact assessments are not routinely integrated into fisheries management
- Conservation , Marine Parks
- Rising costs
- Major Crew and skipper shortages
- Fragmented industry
- Communication is not frequent enough

OUTCOMES FOR SOME

- Reduction of fisher numbers
- Families , business struggling
- Depression, mental health issues, alcoholism
- De- motivation to participate in professional fishing industry associations
- No public face so no community support to draw on when needed

FLOW ON EFFECTS FOR SOME

- Depressed attitude to business
- No desire to try and understand new approaches- No energy, what's the point!
- Things like OH&S, EMS, Food safety are seen as unnecessary industry initiatives
- Feel devalued as a business and private person

**IS THIS NOT A FAMILIAR
STORY AUSTRALIA WIDE?**

SUMMARY OF WHERE WE ARE AT ACROSS AUSTRALIA

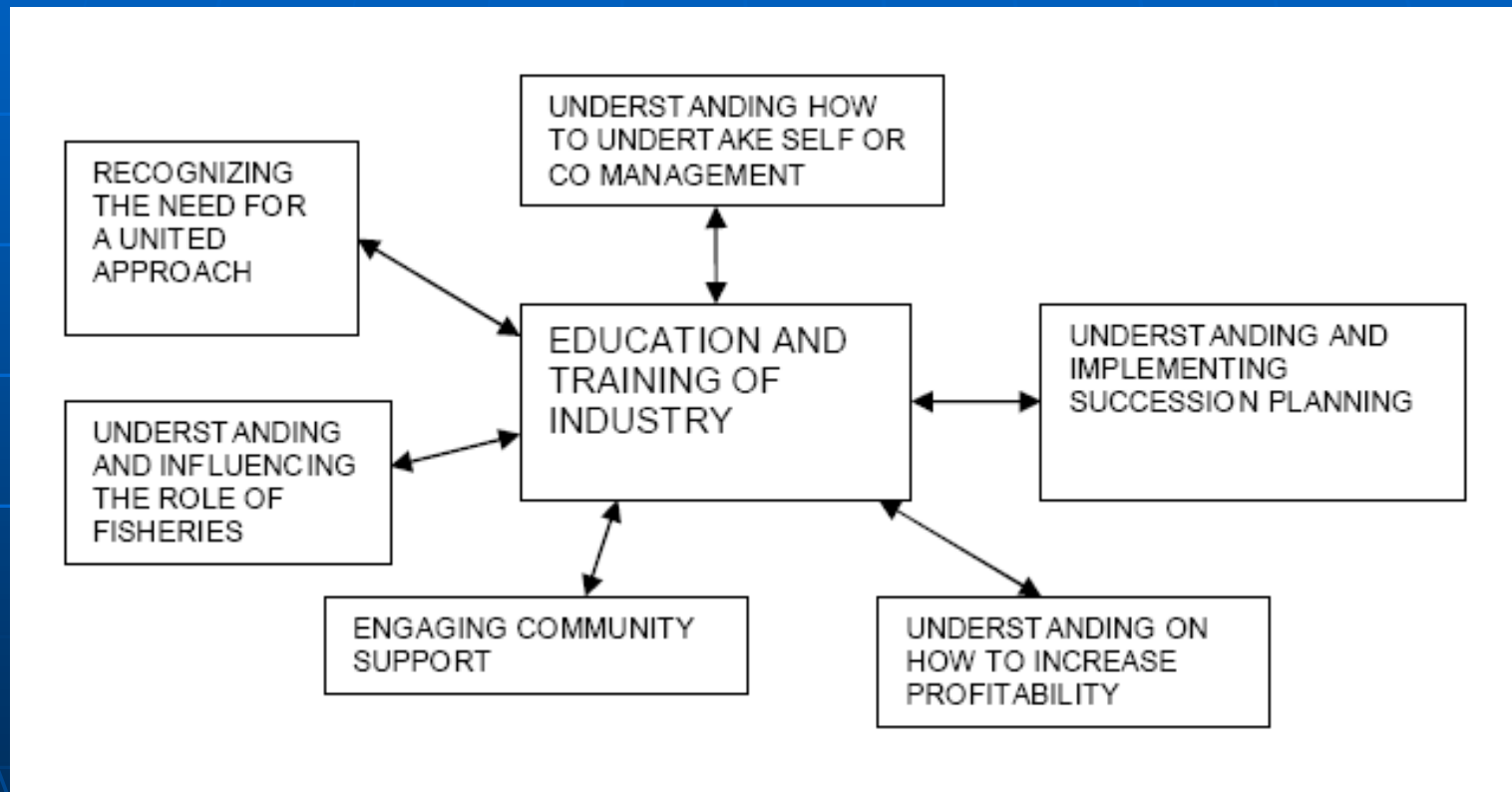
- Industry has not moved with the times!
- Minimal research on social impacts studies and very little on human capacity. Other rural industries have done so and are seeing positive outcomes.
- Research that has been done on social impacts are not implemented by governments and are not on industry's constant radar
- Absence of a national peak body

WHAT CAN BE DONE?

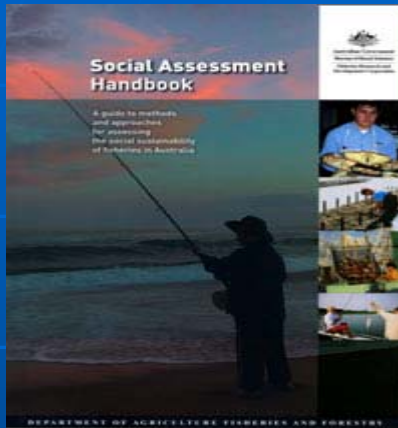
Recognition by industry leaders across Australia that the following needs attention:

- Human capacity (skills, training, education) must be the first priority not the 'thing added on'
- Empowerment of industry must begin
- Social impact assessment must become part of the fisheries management
- Education and training must be a core element of every issue that the peak body deals with

OCTOBER 2007 WAFIC SUMMIT- Critical issues



WHAT TOOLS ARE AVAILABLE?



Social impacts of the South Australian Marine Scalefish Fishery

*Report of a case study conducted as part of the 'Social Assessment Handbook for the Australian fishing sector' project
June 2005*



Australian Government
Bureau of Rural Sciences
Fisheries Research and Development Corporation

Social assessment of commercial fishing in the East Gippsland region

*Report of a case study conducted as part of the 'Social Assessment Handbook for the Australian fishing sector' project
June 2005*

WHAT TOOLS ARE AVAILABLE?

Rural Industries Research and Development Corporation reports(sample):

- Risk and perception – a literature review
- Social prolife of people employed in the AF&F
- Capacity building in rural industries
- Welfare and support services for Farm families
- Evaluating empowerment
- Growing the capital of rural Australia

INDUSTRY INITIATIVES

Industry bodies and members that have recognised that Education and training are the key

- Southern rock lobster – clean green
- Duty of care – WA rock lobster, trawl, abalone, SA marine Scale

These are done on minimal resources using outside funding- industry would not pay the actual price

WHAT CAN WE DO FROM TODAY?

- Recognise that education and training are the key to 'healthiness'
- Get the right people in the right jobs to assist industry
- Utilizing the service of experts in the area that understand the big picture
- Think outside the square. Have some visionaries. Try some new faces around the table.
- Put aside ego's politics and hidden agenda
- Give back to the community

Recognize that people are
what makes this industry!

THANKYOU